

PHASE 02
consultants



ADVANCING DESIGN TO THE NEXT LEVEL
COMPANY PROFILE



BEYOND THE SURFACE:
A DEEPER LOOK INTO PHASE02



Phase 02 is an innovative architectural consultancy office, founded by Malak Hamdan and Labib Sukkar.

Phase 02 provides Design Management and Design Development services for architectural and interior design projects across a range of industries, including residential, corporate, commercial, and F&B.

At Phase 02, our team recognizes the importance of collaboration and communication throughout the full lifecycle of the project. We work closely with our clients to understand their needs and preferences, and then develop Plan and deliver solutions that are tailored to their specific requirements.



MALAK HAMDAN

STORY

Malak Hamdan is the co-founder, managing director of Phase 02 International Ltd.

Malak started her career path as a junior architect at an international firm in Beirut, Lebanon. Passionate about operation and business management, she achieved her master's degree in Engineering Management from the American University of Beirut, completing additional certificates in Organization Management and Business Planning. Moving to Riyadh, Saudi Arabia, she started the department of contract management, planning and time Scheduling for a Multinational Architectural consultant. Using her management skills, she reorganized the operation's systems, organization's database, HR and accounting for the company. In addition to that, she grew a vast experience in Project management, planning and contract management for medium and large-scale project.

Knowing the Added Value which strategies and operation management adds to any small or medium size company, and having the expertise in providing these services, Malak initiated her Entrepreneurship path and established Trinity Business intelligence. Trinity provides strategic planning and business development consultancy services for small to medium size companies.

Over the past two years, Malak has observed a growing need for support among consultants and architectural offices with the vast boom in the construction industry. The pandemic has brought significant changes to the industry, making it more acceptable and efficient to provide services online. With this in mind, Malak decided to start a company that would provide much-needed support to these businesses. With her experience in the consultancy business, she partnered up with Labib Sukkar who had vast experience in the execution of project and Phase- 02 was established.

As a managing partner, Malak is now responsible for leading the firm's design team and overseeing all aspects of design management. She brings a wealth of experience and expertise to the table, and she is committed to ensuring that every project her team takes on is a success.

LABIB SUKKAR

STORY

Labib Sukkar is a highly experienced business leader and entrepreneur with a proven track record in construction, engineering, and project management. Since December 2022, he has been serving as the General Manager of Phase 02 Consultants. In this role, Labib acts as the face of the business and is responsible for managing the project management team to ensure projects are completed on time and within budget. He also identifies new business opportunities and develops long-term plans to drive the company's growth.

Prior to his current role, Labib served as Managing Partner at SET Systems since January 2019. He was responsible for overseeing a wide range of elevator services, including installations and maintenance, and has worked on several high-profile projects, including the Grand Hills Hotel & Spa, Cavalier Hotel, and Lebanese General Security.

Labib is also the founder and General Manager of S Construction since January 2012. His responsibilities include undertaking construction execution and engineering works for residential, commercial, and food and beverage projects. Among the major projects he has worked on are the paint works for elevation of NSDS (ZAHA HADID) in Beirut Souks, the Eben Rushd Building in Verdun, and the Gebran Villa in BeitMisk.

Labib began his career in the construction and engineering industry as a Construction Manager at reputable contracting firm in Lebanon, in August 2009. He managed multiple projects, including the construction of a complex of seven buildings in Beirut, two villas in Btater, and finishing work on six residential buildings in Beit Misk.

Labib's skills include team leadership, project management, design management, time planning, people skills, technical presentations, consulting, active listening, problem solving, and estimation and pricing. His expertise and leadership have played an instrumental role in the successful completion of several high-profile projects throughout his career.



DRIVING CHANGE THROUGH PURPOSEFUL MISSION

At Phase 02, our mission is to empower our clients to achieve their vision by providing comprehensive design management services for the design development phase. We believe that every project is unique, and we strive to enhance the built environment through innovative, sustainable, and cost-effective design solutions that not only meet but exceed our clients' expectations.

Our team of experienced professionals is committed to delivering personalized and collaborative services that are tailored to each client's unique needs.

We believe that trust, integrity, and mutual respect are the cornerstones of any successful relationship, and we aim to foster long-term relationships with our clients based on these values.

We take pride in our Pre-planning and systematic project management skills, delivered by our experienced team who have combined their experiences from design, scheduling, procurement, and execution of various projects over the years.

At Phase 02, we are committed to staying at the forefront of our industry, using the latest technology and project management techniques to deliver exceptional results.

We believe that our success is measured by the success of our clients, and we are committed to helping them achieve their goals and realize their vision.

LOOKING
TOWARDS
THE FUTURE:
OUR VISION

At Phase 02, our ultimate goal is to be recognized as a leading design management company in the architectural consultancy industry. We are committed to providing exceptional design management services for the design development phase, and we strive to exceed our clients' expectations with every project we undertake.

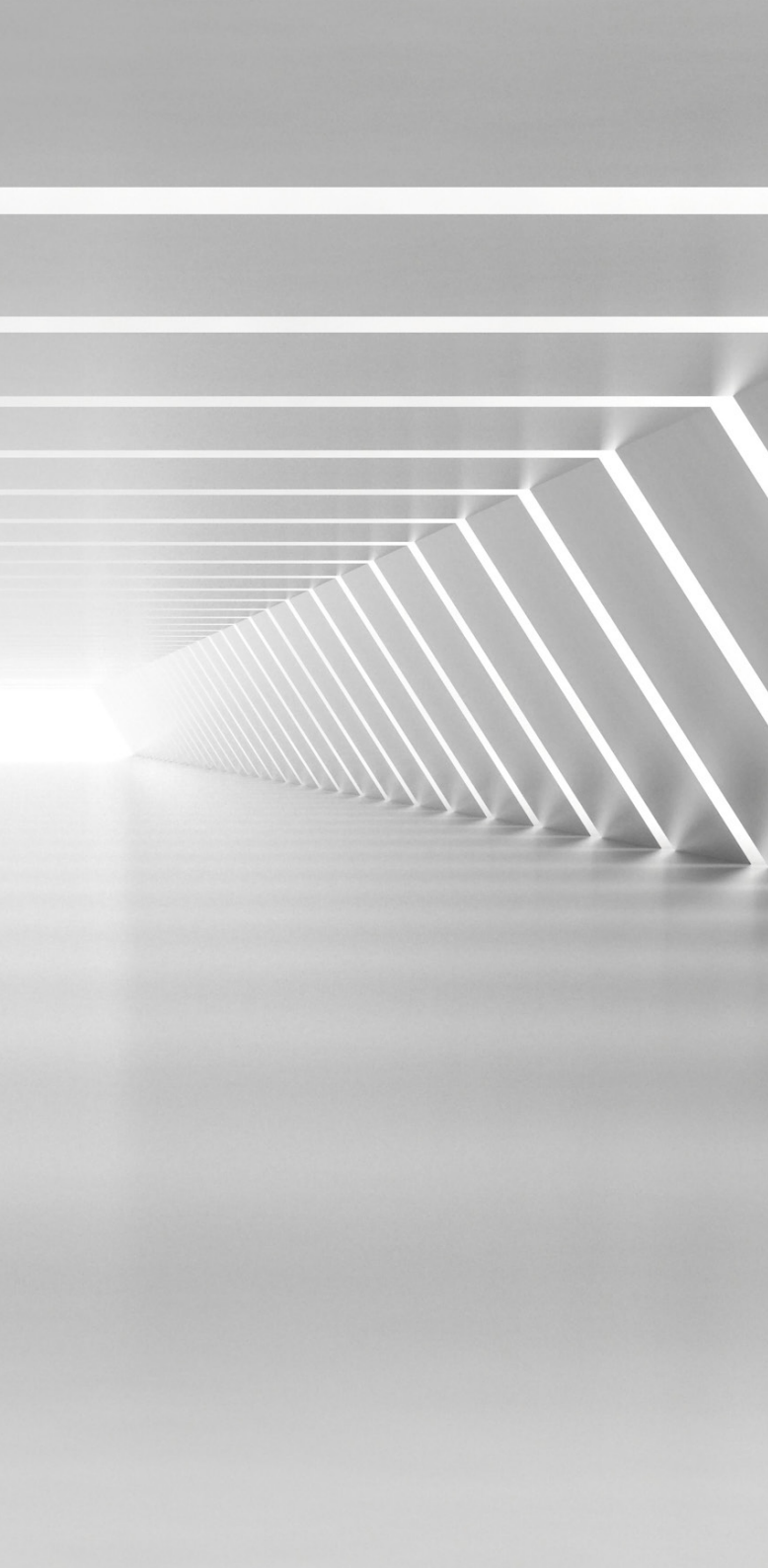
We believe that excellence in design management is not just about delivering outstanding design solutions, but also about providing exceptional client service.

We are constantly looking for ways to improve our services and stay at the forefront of our industry. We invest in the latest technology and design management techniques, and we encourage our team members to pursue ongoing professional development and training to enhance their skills and expertise.



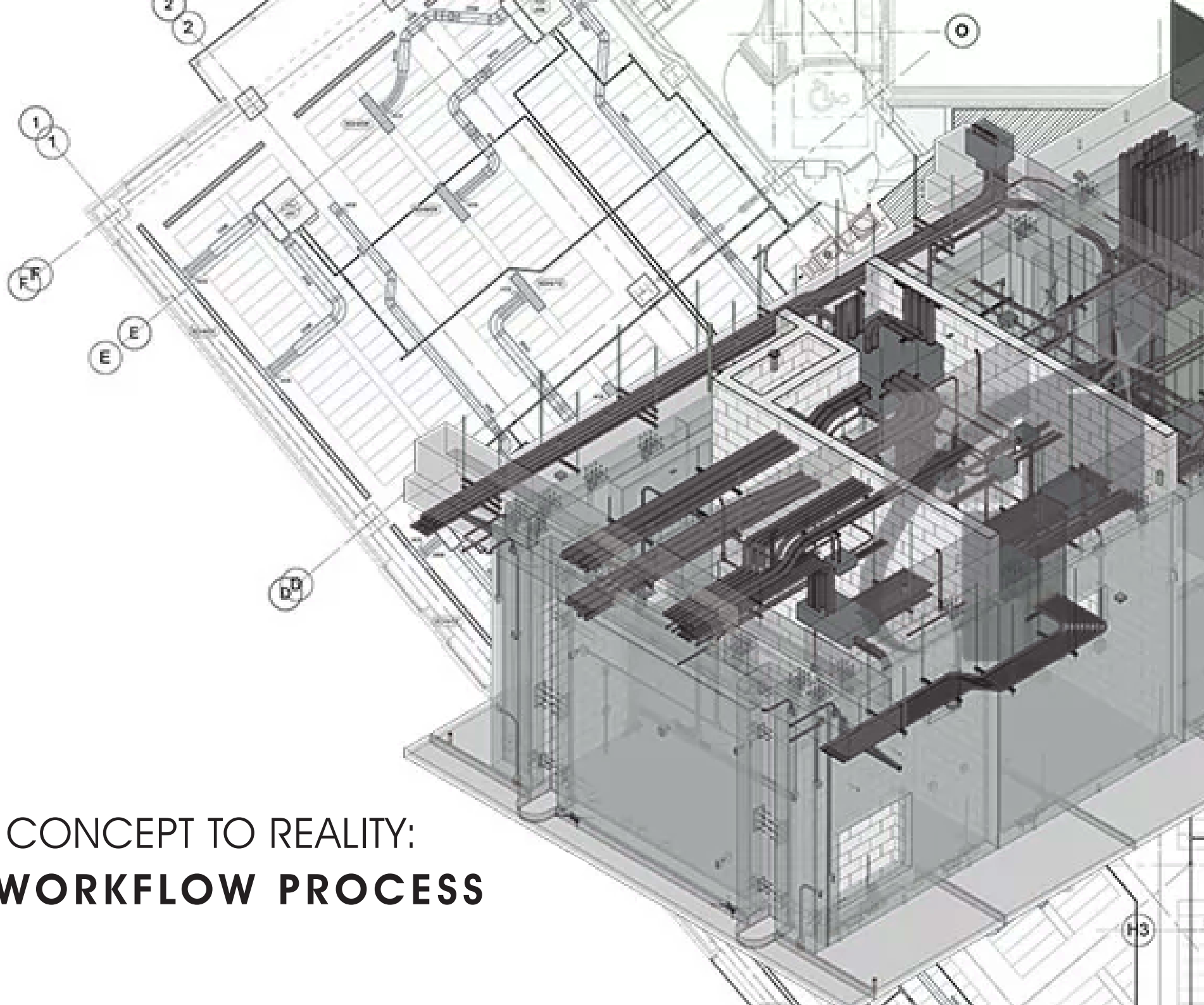


EMPOWERING YOUR VISION:
OUR COMPREHENSIVE SERVICES

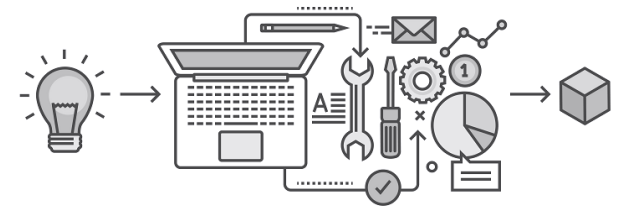


Our range of services at Phase 02 includes:

1. Design Management services covering planning, scheduling, cost control, and risk management
2. Architectural Design Development packages comprising Schematic design, design development drawings, execution drawings, and tender documents
3. Structural Engineering Design Development packages encompassing Schematic design, design development drawings, execution drawings, and tender documents
4. Mechanical Engineering Design Development packages comprising Schematic design, design development drawings, execution drawings, and tender documents
5. Electrical Engineering Design Development packages including Schematic design, execution drawings, and tender documents
6. Landscape design and development services
7. Shop drawings for Architectural, Interior Design, Structural, Mechanical, and Electrical, disciplines
8. Building Information Modeling (BIM) modeling services, achieving LOD 350.
9. Assigning and managing specialists in Façade design, Kitchen consultancy, and acoustic consultancy.



FROM CONCEPT TO REALITY:
OUR WORKFLOW PROCESS



At Phase 02, we provide a precise deliverables plan for each project, tailored to the specific needs of the client and the project. Each client and project is assigned a dedicated team leader who is responsible for delivering and coordinating the entire process, in accordance with the initial agreement. Our team leader selects the best architects, engineers, and specialists required to complete the project, based on the initial brief and RFP.

To ensure optimal project management, we utilize innovative and specific systematic planning tools from the project's initiation, which allows us to customize a delivery plan according to the client's and owner's needs. Our agile management approach ensures that we avoid rework and deliver the project in the most efficient time possible.

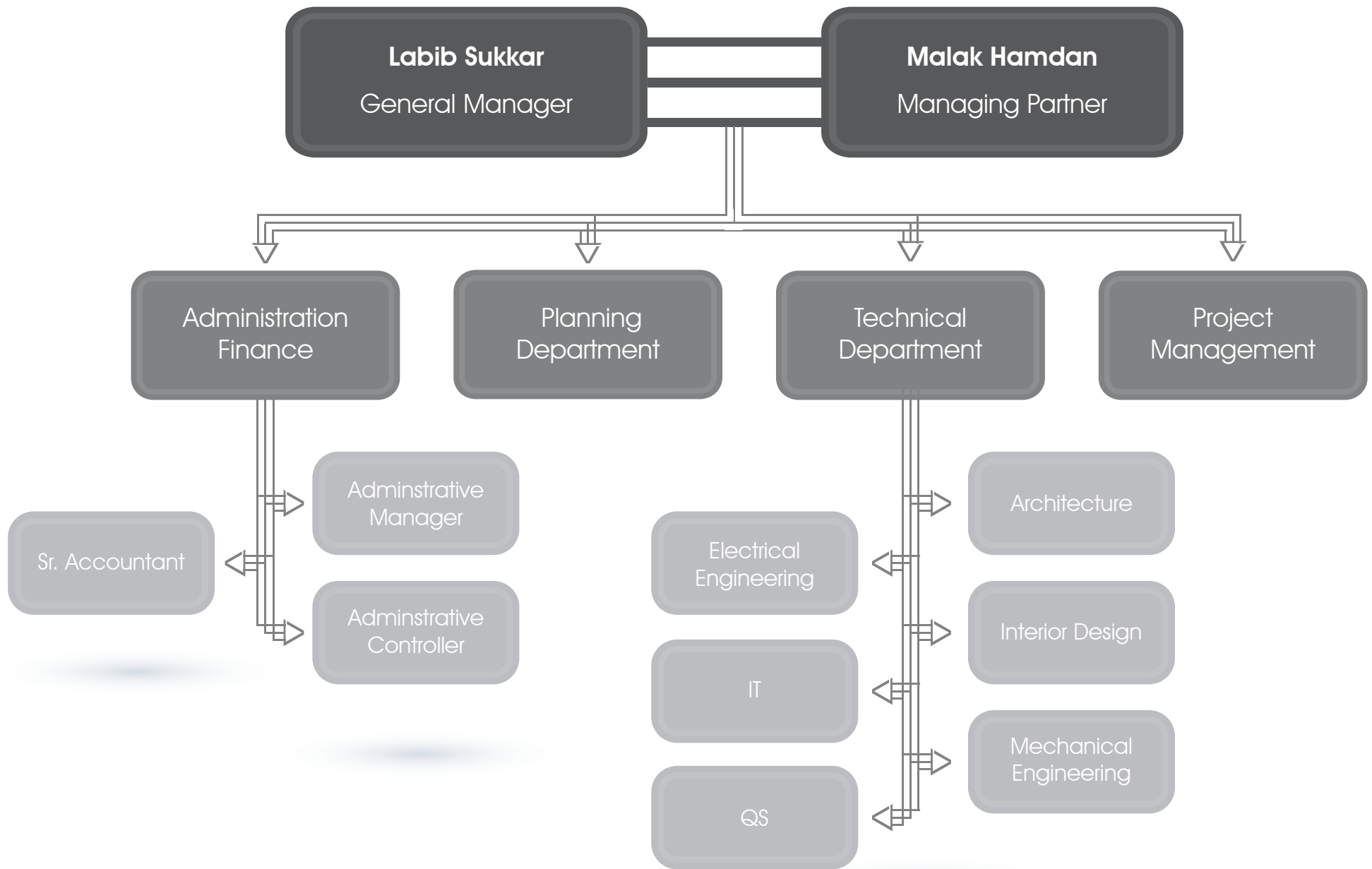
Our vision is to utilize the most innovative technologies and software in project management to provide clients with the required deliverables within the most efficient time frame. We understand that time is money, and the quicker we can deliver, the more satisfied our clients will be.

We operate using a hybrid work system that enables us to deliver all projects as per the initially agreed schedule, regardless of any external circumstances.



OUR TEAM:

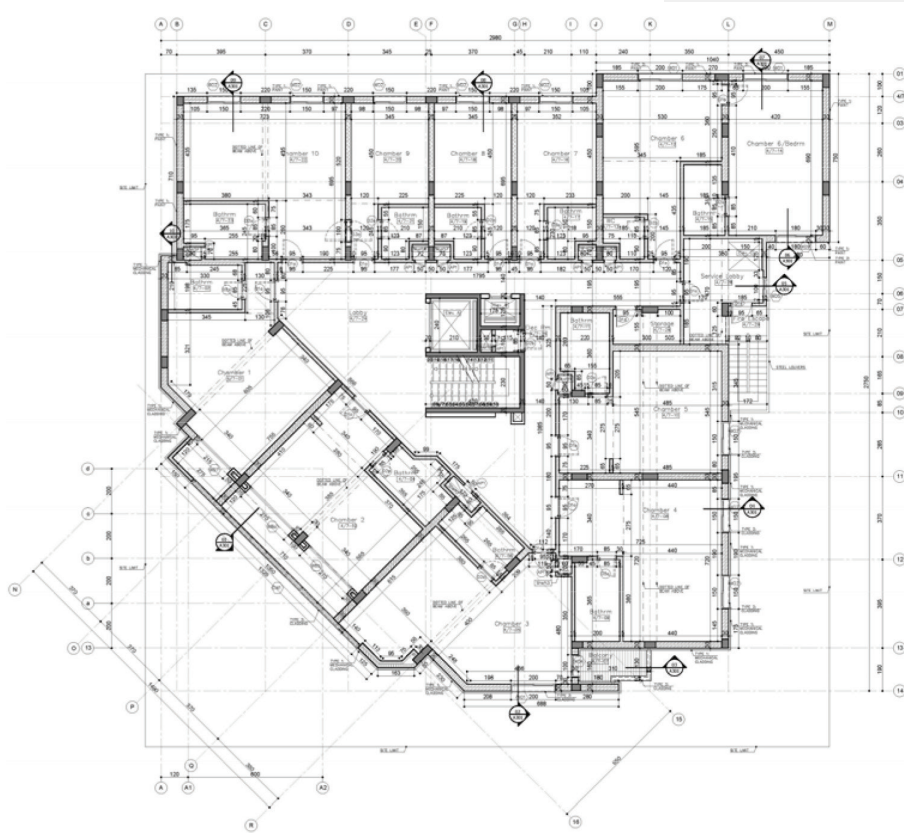
ORGANIZATIONAL CHART



Brazzaville Hotel

Location: Congo

Floor Area: 6554m²



Scope of work: Site visiting - Redesign the hotel - Execution drawings and Managing Contractor Biddings. In addition to traveling to Istanbul to check material supplies and meeting the contractor.

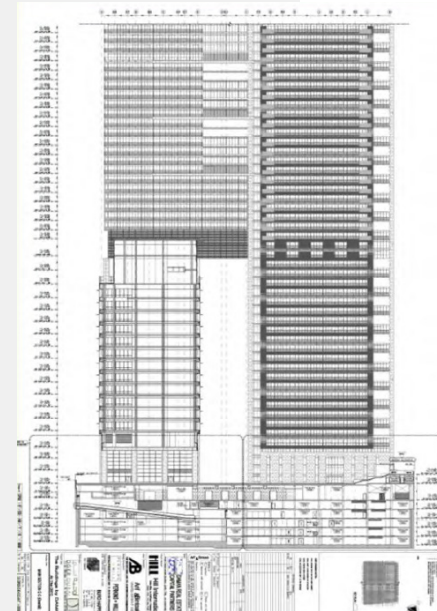
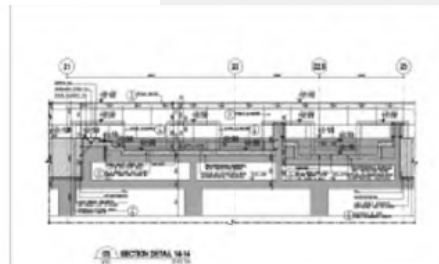
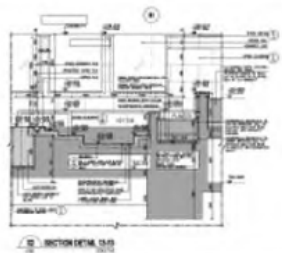
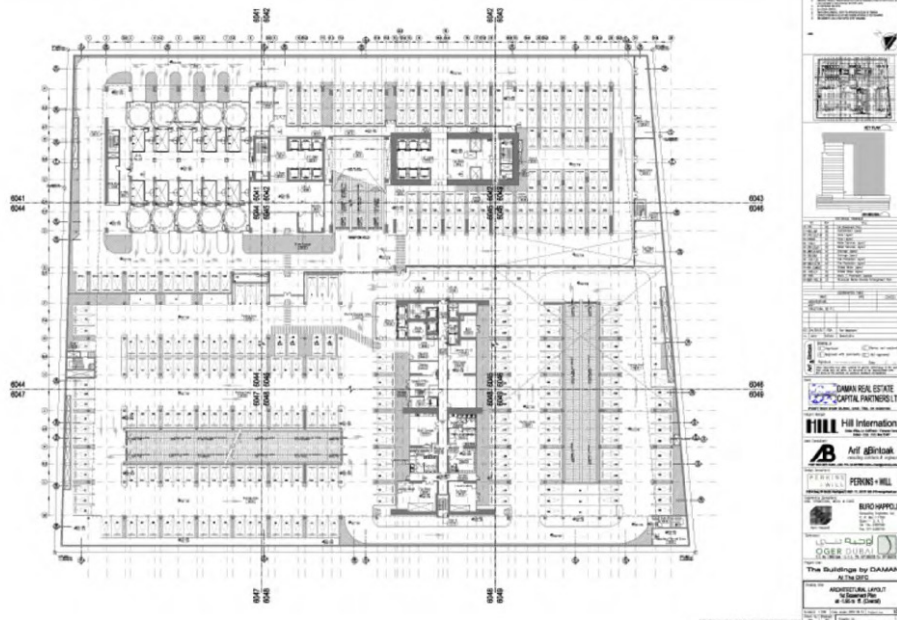


Daman Complex

Location: Dubai - UAE

Floor Area: 430m²

- Scope of work:
- Execution Drawings
 - Coordination with site
 - Client Drawings

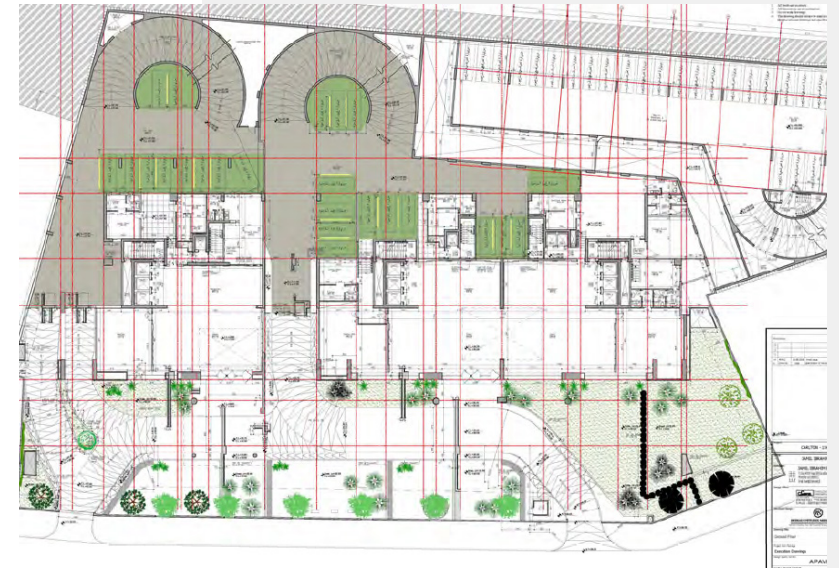
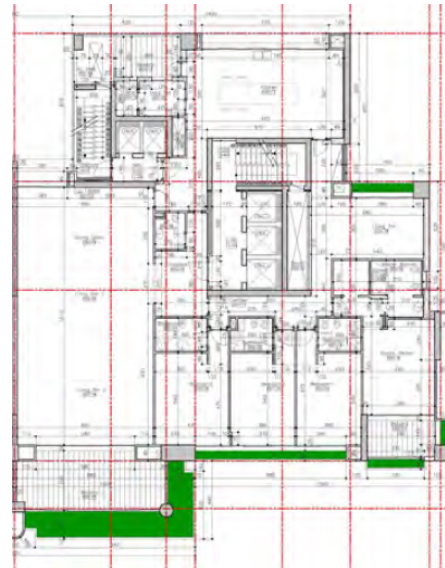


Carlton Residence

Location: Rouche - Beirut

Floor Area: 7,482m²

- Scope of work:
- Execution Drawings
 - Coordination with site
 - Client Drawings



Ghazal Residence

Location: Verdun - Lebanon

Site Area: 1,120m²

Floor Area: 544 m²

Scope of work: - Execution Drawings

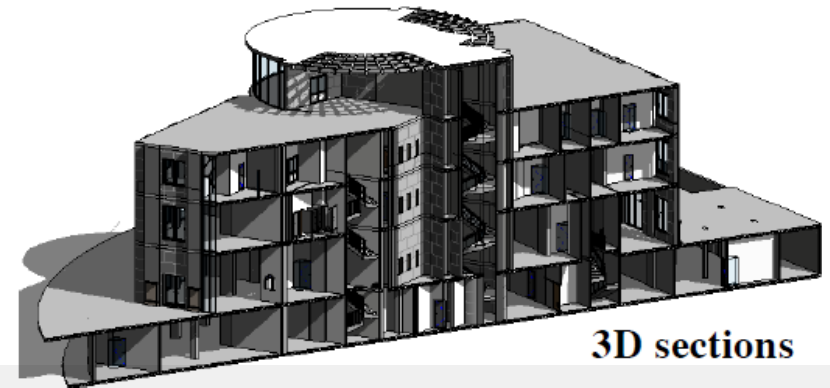


BIM PROJECTS

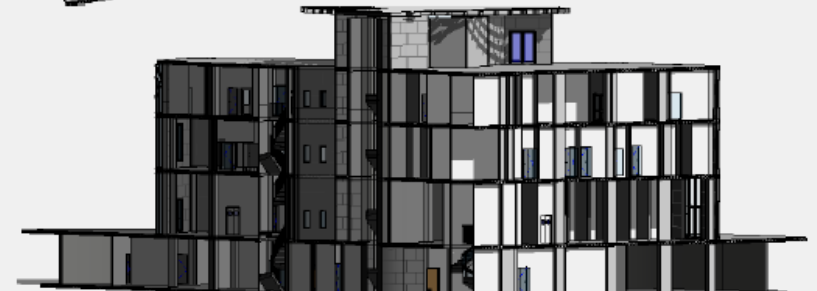
See Way Mall

Location: Egypt

Scope of work: - Revit Modeling
- BIM



3D sections



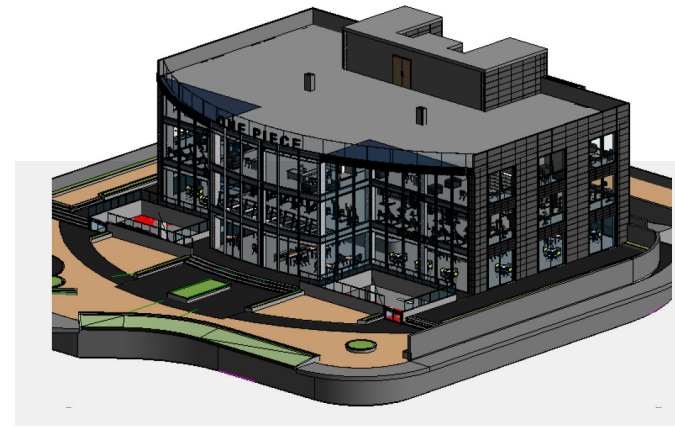
One Piece Mall

Location: Egypt

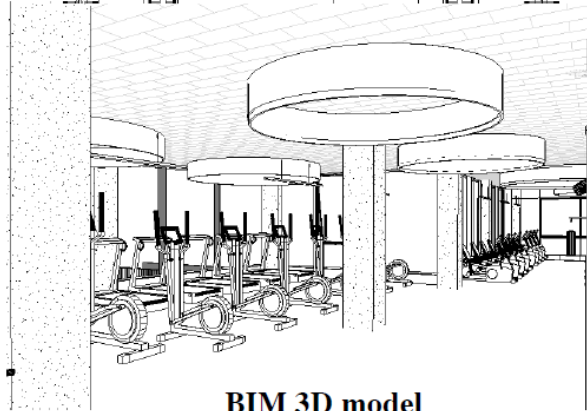
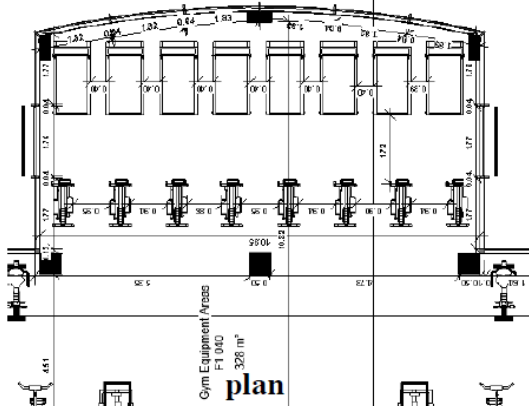
Site Area: 1,120m²

Floor Area: 544 m²

Scope of work: - Revit Modeling - BIM
- Execution Drawing - CAD

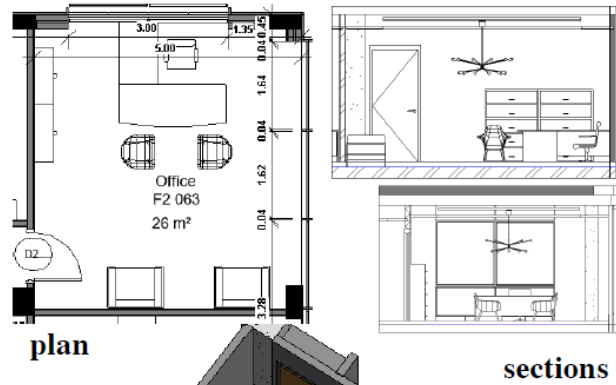


GYM EQUIPMENT AREA



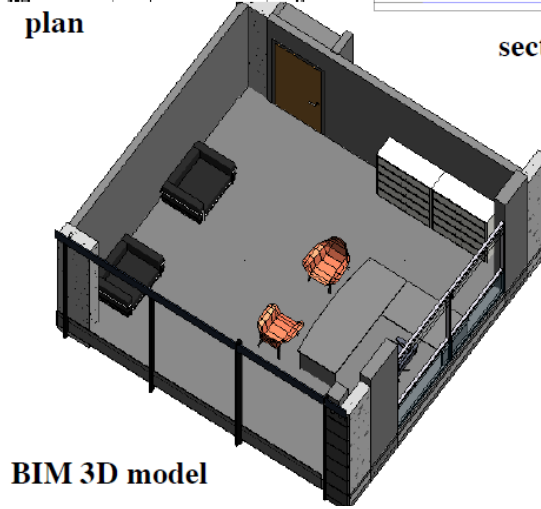
BIM 3D model

OFFICE



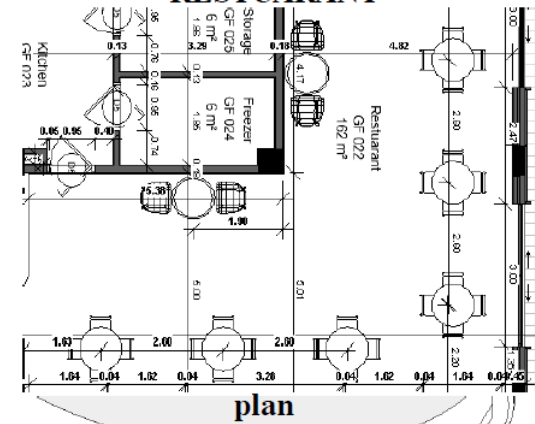
plan

sections



BIM 3D model

RESTUARANT



plan



BIM 3D model

Jeddah Sale Center

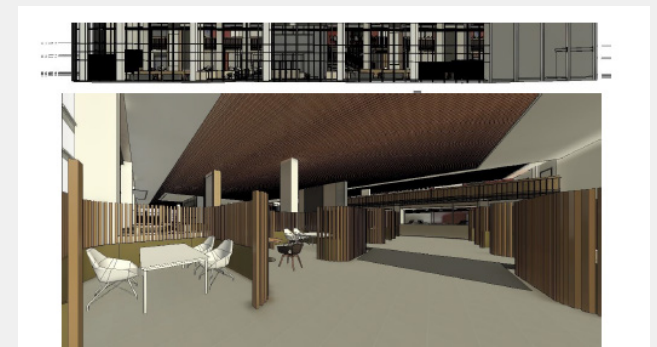
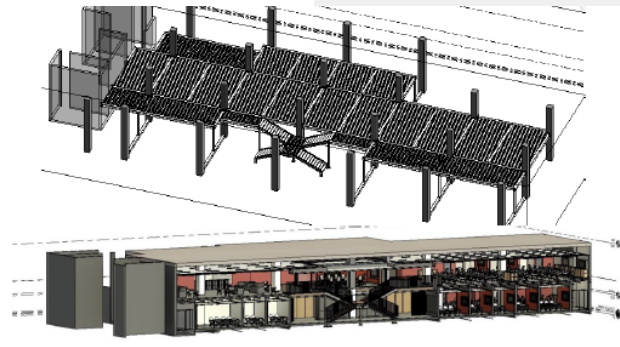
Location: Jeddah - KSA

Scope of work: - Architectural

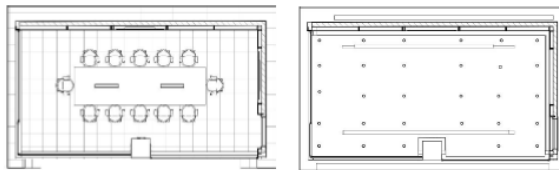
- Interior

- Structural, Mechanical & Electrical

Modeling

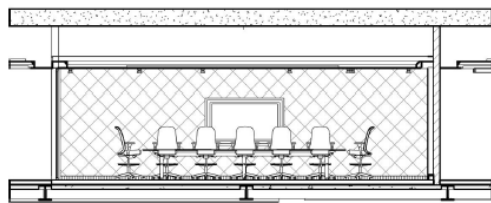


VIP Meeting room for 12 persons

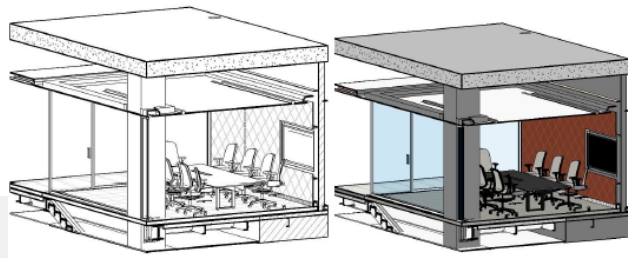


plan

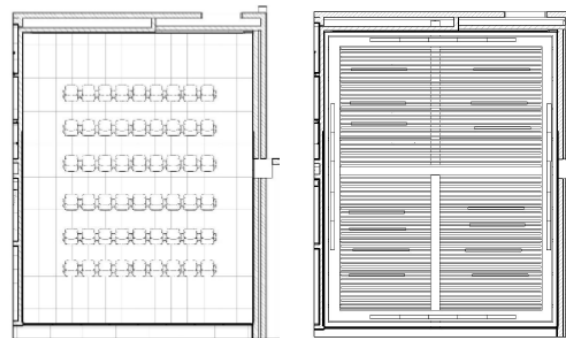
Ceiling plan



Section

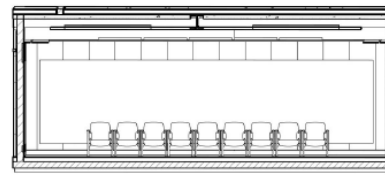


MULTI-PURPOSE ROOM

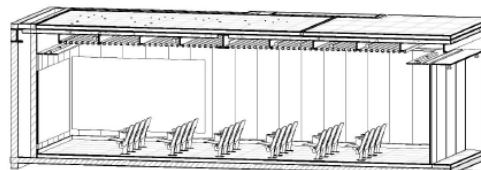


plan

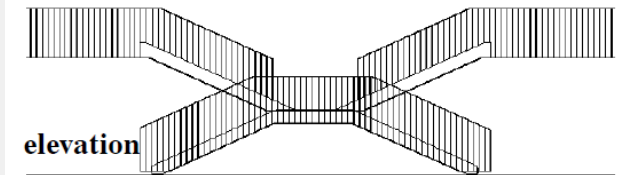
Ceiling plan



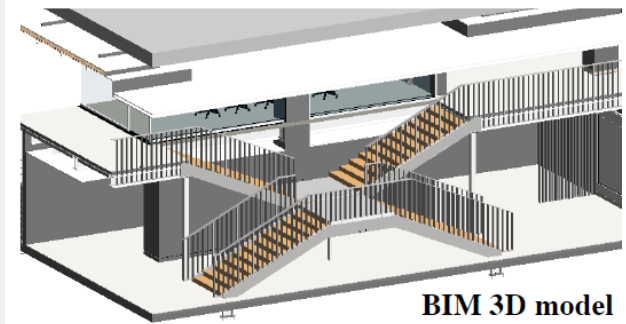
Section



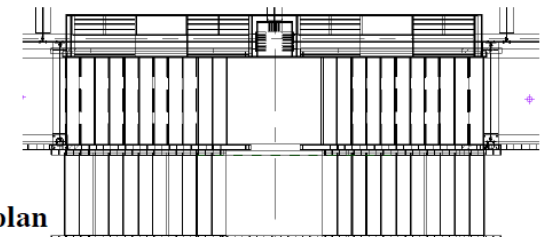
STAIRCASE



elevation



BIM 3D model

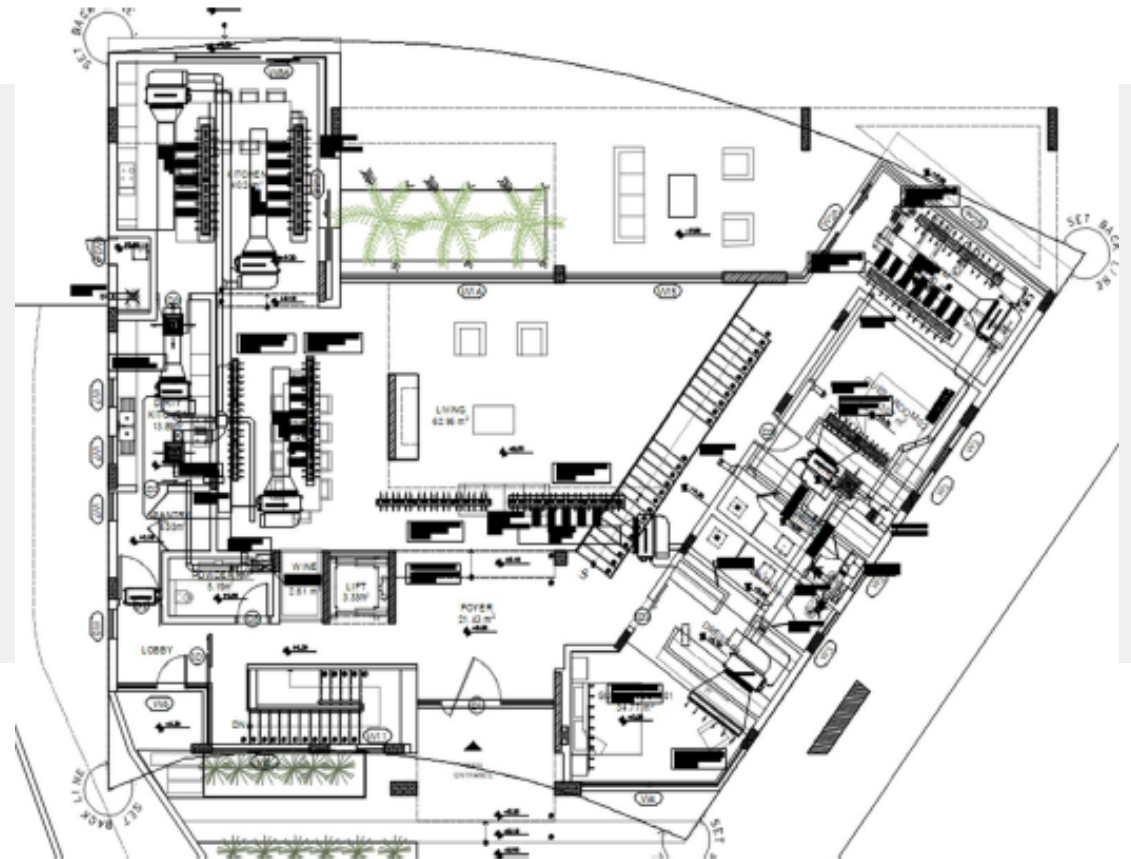
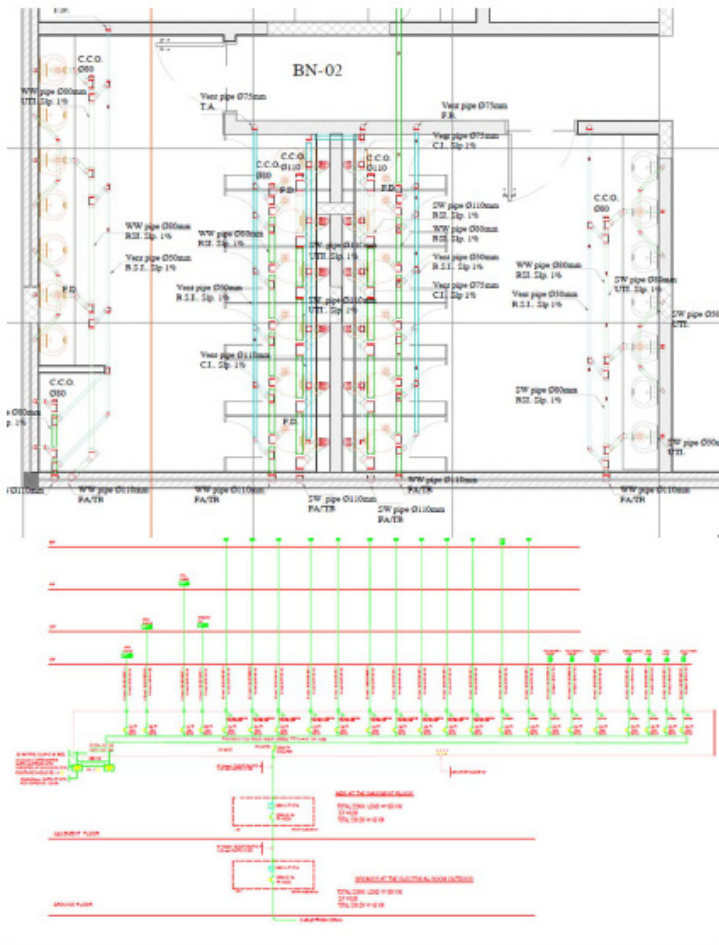


plan

Luxury Villas in Dubai

Location: Dubai - UAE

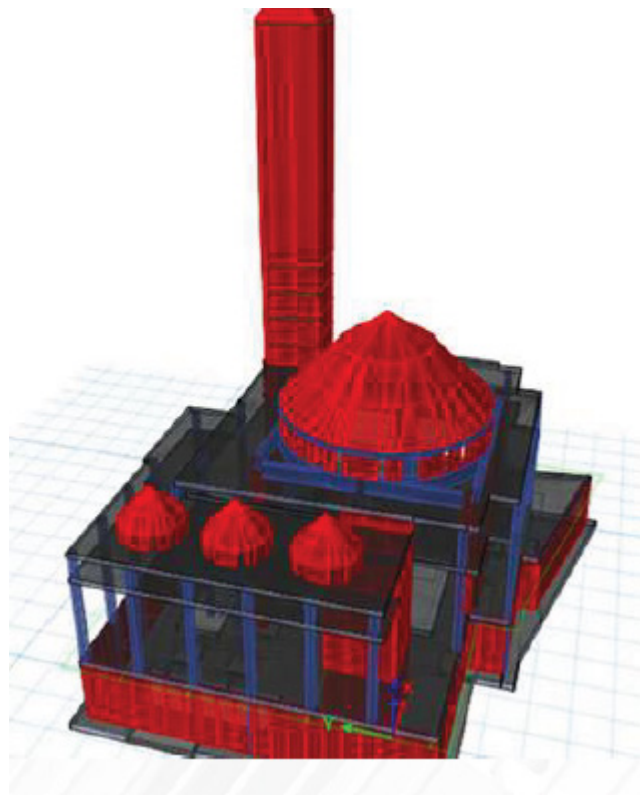
Scope of work: - Design Detailed MEP
- Hvac - Drainage - Power -Low current



Mr. Tarek Akkawi Mosque

Location: Saida - Lebanon

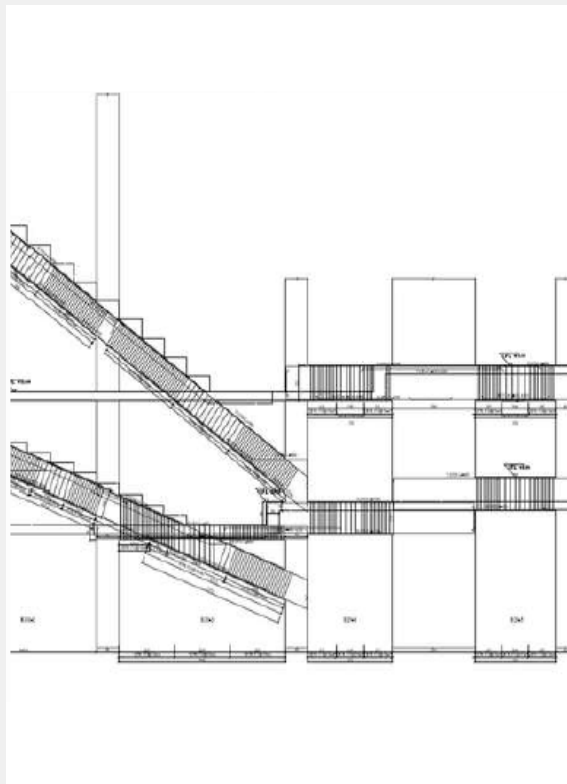
Scope of work: - Value engineering for mosque where numerical analysis has been used for optimum design as per ACI 318 code



Salle De Performance

Location: Kinshasa - DRC

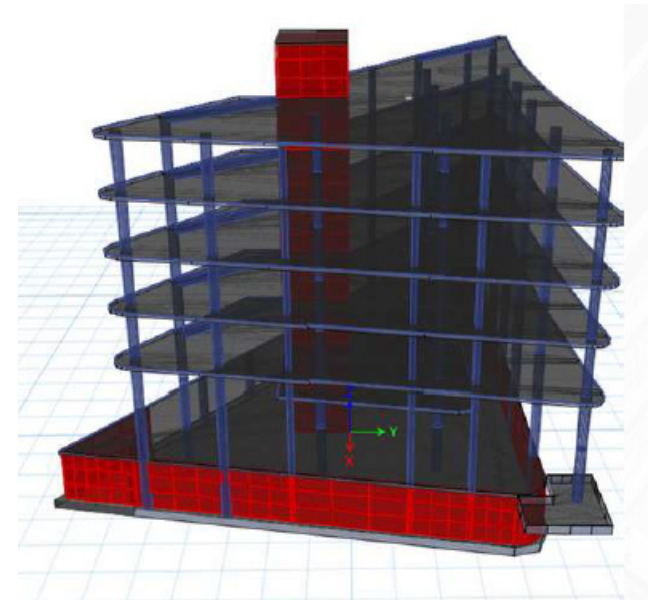
Scope of work: - Design & Execution drawing for 5000 capacity theater



Office Building

Location: Sour - Lebanon

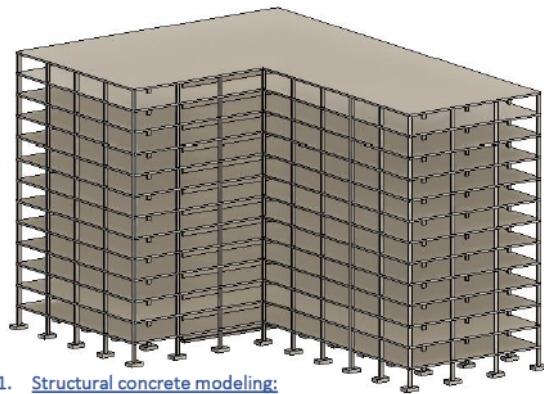
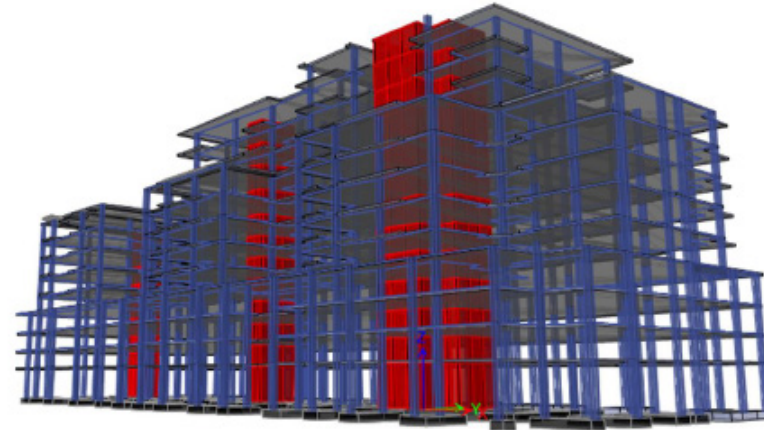
Scope of work: -Structural design and assessment - design of vertical elements and foundation using etabs.



Siiengineers Wynwood Building

Location: California - USA

Scope of work: - Structural design and assessment



1. Structural concrete modeling:

Modeling all structural elements taking into consideration the connections between members.

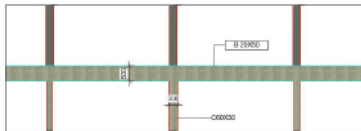


Figure 1 Beams and column proper modeling

As we can see the columns reach the bottom of the beam.

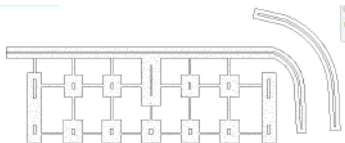


Figure 2 Foundation modeling

We can use the Revit model to extract bill of quantity for all structural elements.

<Floor Schedule>				
A	B	C	D	E
Level	Family and Type	Default Thickness	Area	Volume
Floor 2	Floor: SS25CM	250	1595 m²	398.83 m³
Floor 3	Floor: SS25CM	250	1595 m²	398.83 m³
Floor 4	Floor: SS25CM	250	1595 m²	398.83 m³
Floor 5	Floor: SS25CM	250	1595 m²	398.83 m³
Floor 6	Floor: SS25CM	250	1595 m²	398.83 m³
Floor 7	Floor: SS25CM	250	1595 m²	398.83 m³
Floor 8	Floor: SS25CM	250	1595 m²	398.83 m³
Floor 9	Floor: SS25CM	250	1595 m²	398.83 m³
Floor 10	Floor: SS25CM	250	1595 m²	398.83 m³
Floor 11	Floor: SS25CM	250	1595 m²	398.83 m³
Floor 12	Floor: SS25CM	250	1595 m²	398.83 m³
Lobby	Floor: SS25CM	250	1595 m²	398.83 m³
Basement	Floor: SS25CM	250	1595 m²	398.83 m³

Figure 3 slabs quantity

After finish the modeling we have to check the analytical model to make sure all elements are connected properly.

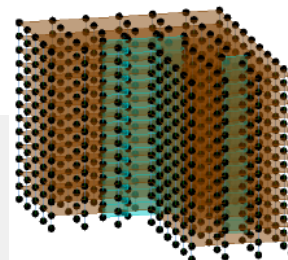


Figure 4 Analytical model

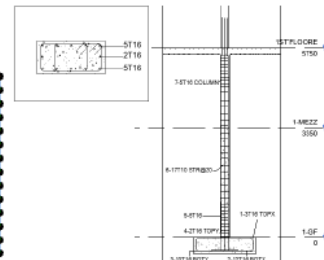


Figure 5 Foundation and column reinforcement

As we can see all columns are supporting the slabs so the analytical model is good so we can proceed with structural design.

After finishing all the structural design, we model the steel reinforcement for all concrete elements.

2. Structural steel modeling

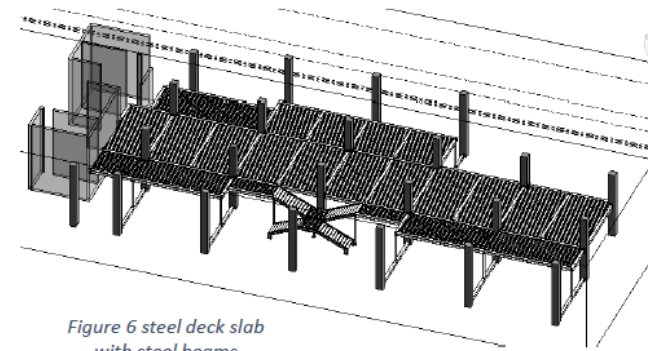


Figure 6 steel deck slab with steel beams

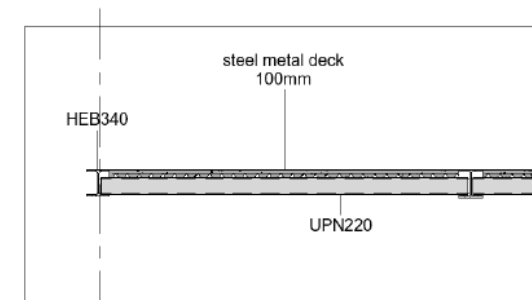


Figure 7 Detail section